

ADELANTE FORWARD

A multicultural magazine dedicated to the health, education, and welfare of Mid-Michigan area residents.
Una revista multicultural dedicada a la salud, a la educación y al bienestar de los residentes del área de Mid-Michigan.



MAY 2026



**CRISIS
CARE
CENTER**

Hope, Support and Healing



Community
MENTAL HEALTH
CLINTON • EATON • INGHAM

Together we can.

**Hope Grows: CMHA-CEI is Expanding
Access to Care This Summer**



Tu perteneces aquí

lcc.edu/youbelong

Lansing Community College prohíbe la discriminación en cualquier actividad o programa educativo que organice. Las personas pueden expresar sus inquietudes o realizar preguntas al Coordinador de Título IV. El aviso de no discriminación se encuentra en lcc.edu/consumers/information.



LAND ANYWHERE

New flights from Lansing to Chicago and global connections with United Airlines!



Book now



We're celebrating a century of flights at the Capital Region International Airport! Follow along as we honor the past while soaring to the future.





Crece la esperanza: CMHA-CEI amplía el acceso a la atención médica este verano

Por Sara Lurie, directora ejecutiva de Salud Mental Comunitaria de los condados de Clinton, Eaton e Ingham



La comunidad no es solo un lugar. Es una promesa. Es una promesa de cuidar a quienes le rodean y tratarlos con amabilidad. Una promesa de crear espacios donde personas de todas las edades puedan acudir en busca de apoyo y ser recibidas con compasión, dignidad y esperanza. Una promesa de acompañar a niños, adultos y familias mientras enfrentan desafíos de salud mental y conductual, y de ayudarles a saber que no están solos.

Por eso me enorgullece compartir que este verano, la Autoridad de Salud Mental Comunitaria de los condados de Clinton, Eaton e Ingham (CMHA-CEI) inaugurará un proyecto muy necesario y largamente anhelado: el Centro de Atención de Crisis.

El Centro de Atención de Crisis representa años de planificación, perseverancia, colaboración y compromiso con nuestra comunidad.

Esto es más que la inauguración de un edificio. Es el resultado de un esfuerzo conjunto de muchas personas, en diversos ámbitos, que creyeron que nuestra comunidad merecía una mejor respuesta para los adultos, los jóvenes y las familias que atraviesan una crisis de salud conductual.

Muchas personas, con su esfuerzo y dedicación, nos han ayudado a llegar hasta aquí. Estoy profundamente agradecida a los líderes federales, estatales y locales, así como a los socios, defensores, personal y colaboradores que creyeron en esta visión y continúan invirtiendo en su progreso. Este centro es un testimonio de colaboración. Esto demuestra que el crecimiento significativo ocurre cuando escuchamos, trabajamos juntos y mantenemos el compromiso de atender las necesidades de nuestra comunidad.

En **CMHA-CEI**, sabemos que el acceso por sí solo no es suficiente.

Las personas necesitan profesionales capacitados que puedan ayudarlas a superar algunos de sus momentos más vulnerables con experiencia clínica, profunda compasión y sensibilidad. Necesitan una atención culturalmente sensible, informada sobre el trauma y basada en la dignidad.

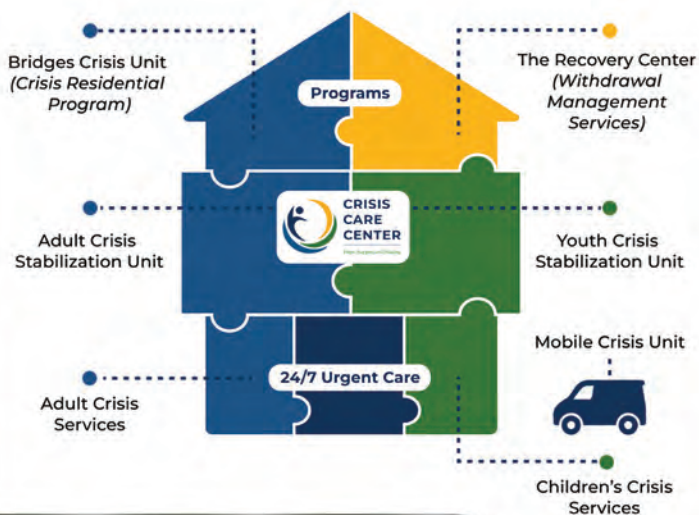
Hemos abordado cada aspecto del Centro de Atención de Crisis con un propósito claro. Desde la planificación inicial y las opiniones de la comunidad hasta el diseño del espacio y la atención que se brinda en su interior, hemos trabajado para

crear un centro donde las personas se sientan seguras, valoradas y apoyadas desde el momento en que cruzan la puerta.

El Centro de Atención de Crisis representa un paso transformador hacia adelante para nuestra región. Ofrecerá una alternativa segura y terapéutica a una sala de emergencias y, en algunos casos, incluso a la privación de libertad, para las personas que necesitan apoyo inmediato en salud conductual.

Este centro también reafirma lo que sabemos que es verdad. La salud mental y conductual debe tratarse como una parte esencial de la salud integral de cada persona.

Esta influye en cómo nos desenvolvemos en el mundo, cómo cuidamos a nuestras familias, cómo nos conectamos con los demás y cómo respondemos al estrés, la pérdida, la incertidumbre y el cambio. Cuando las necesidades de salud conductual no se atienden, sus efectos se extienden a nuestros hogares, escuelas, lugares de trabajo y vecindarios.



Por eso es tan importante contar con apoyo oportuno y compasivo. Mientras nos preparamos para la apertura del nuevo Centro este verano, la seguridad y el apoyo siguen estando disponibles en este momento a través de los servicios de crisis 24/7 de **CMHA-CEI**.

El año pasado, **CMHA-CEI** atendió a casi 15 000 personas y familias a través de sus programas y servicios. Esa cifra representa vidas, historias, luchas y posibilidades. Nos recuerda que la salud mental y conductual afecta a todos los ámbitos de nuestra comunidad.

Pedir ayuda no es una debilidad; es una muestra de fortaleza. Se requiere valentía para reconocer las señales a tiempo, ya sea en nosotros mismos o en alguien a quien queremos y para buscar apoyo antes de que un problema se convierta en una crisis. La recuperación es real y el acceso a la atención adecuada puede marcar una diferencia significativa para las personas y las familias, creando un camino más amplio hacia la esperanza, el apoyo y la sanación.

Y esa esperanza nos pertenece a todos.

PARA RECIBIR ATENCIÓN INMEDIATA

los Servicios de Crisis para Adultos

 **517-346-8460**

los Servicios de Crisis para Niños

 **517-346-8008**

Puede encontrar más información sobre los servicios de CMHA-CEI

www.ceicmh.org





Hope Grows: CMHA-CEI is Expanding Access to Care This Summer

By Sara Lurie, CEO, Community Mental Health Authority of Clinton, Eaton, Ingham Counties



Community isn't just a place. It's a promise. It's a promise to care for those around you and treat them with kindness. A promise to create spaces where people of all ages can turn for support and be met with compassion, dignity and hope. A promise to walk alongside children, adults and families as they navigate mental and behavioral health challenges, and help them know they aren't alone.

That is why I'm so proud to share that this summer, the Community Mental Health Authority of Clinton, Eaton, and Ingham Counties (**CMHA-CEI**) will open the doors to something deeply needed and long envisioned: the Crisis Care Center.

The Crisis Care Center represents years of planning, persistence, partnership and commitment to our community.

This is more than the opening of a building. It is the result of a shared effort by many people, across many systems, who believed our community deserved a better response for adults, youth and families experiencing a behavioral health crisis.

So many hands and hearts have helped bring us here. I am deeply grateful to the federal, state and local leaders, partners, advocates, staff and supporters who believed in this vision and continue to invest in its progress. This center is a testament to collaboration. It is proof that meaningful growth happens when we listen, work together and stay committed to meeting the needs of our community.

At **CMHA-CEI**, we know access alone is not enough.

People need trained professionals who can help them through some of their most vulnerable moments with clinical expertise, deep compassion and sensitivity. They need care that is culturally responsive, trauma-informed and rooted in dignity.

We have approached every part of the Crisis Care Center with intention. From early planning and community feedback to the design of the space and the care provided inside it, we have worked to create a center where people feel safe, seen and supported from the moment they walk through the door.

The Crisis Care Center is a transformational step forward for our region. It will provide a safe, therapeutic alternative to an emergency room — and in some cases, even incarceration — for people who need immediate behavioral health support.

This center also affirms what we know to be true. Behavioral and mental health should be treated as essential parts of a person’s overall health.

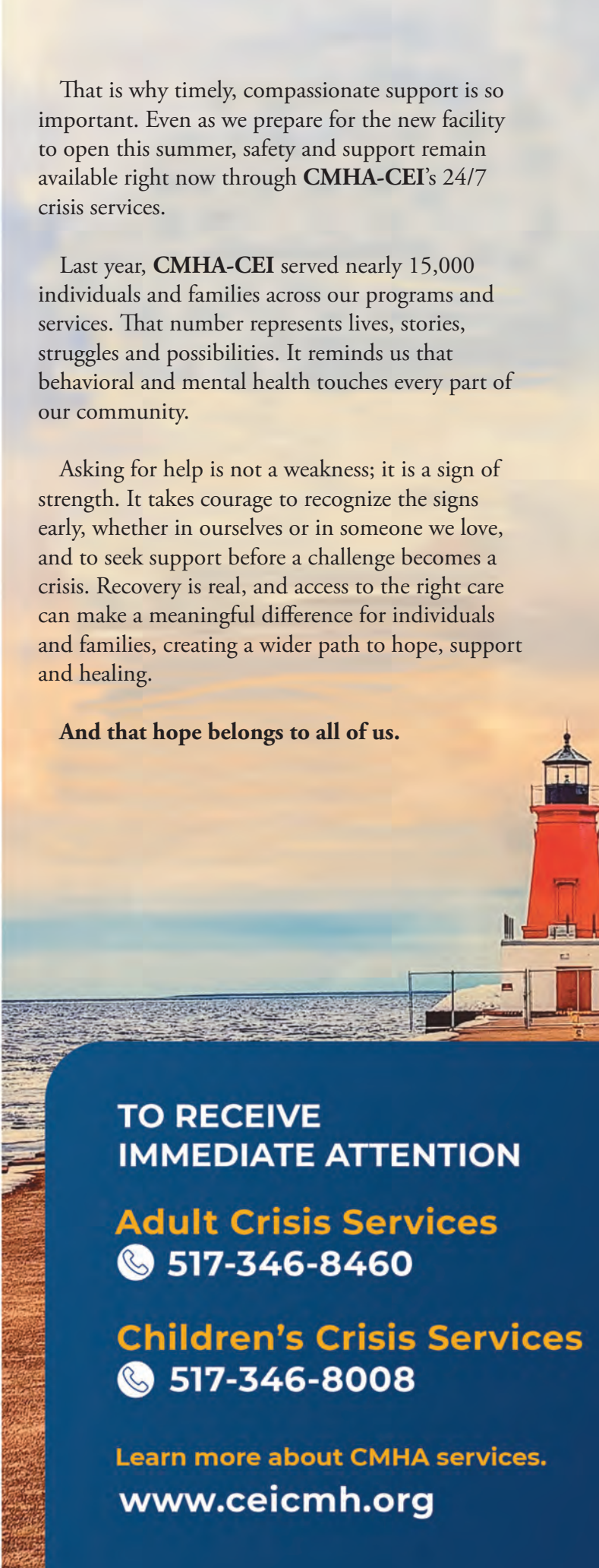
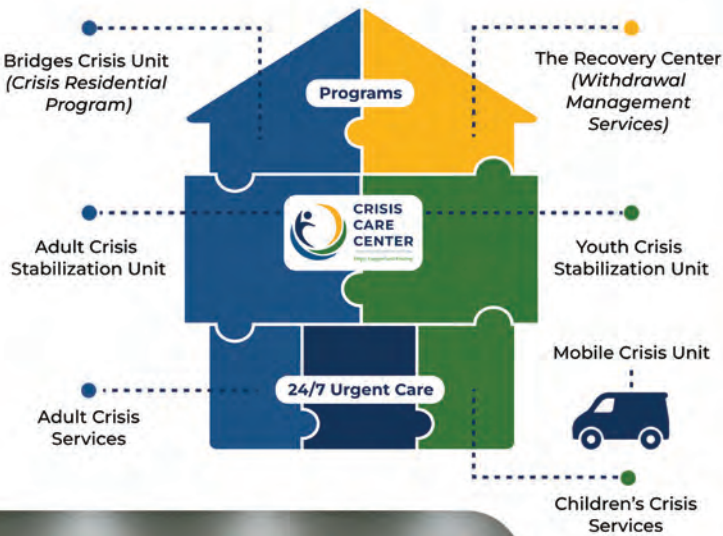
It shapes how we move through the world, how we care for our families, how we connect with others and how we respond to stress, loss, uncertainty and change. When behavioral health needs go unmet, the effects ripple into our homes, schools, workplaces and neighborhoods.

That is why timely, compassionate support is so important. Even as we prepare for the new facility to open this summer, safety and support remain available right now through **CMHA-CEI’s 24/7 crisis services.**

Last year, **CMHA-CEI** served nearly 15,000 individuals and families across our programs and services. That number represents lives, stories, struggles and possibilities. It reminds us that behavioral and mental health touches every part of our community.

Asking for help is not a weakness; it is a sign of strength. It takes courage to recognize the signs early, whether in ourselves or in someone we love, and to seek support before a challenge becomes a crisis. Recovery is real, and access to the right care can make a meaningful difference for individuals and families, creating a wider path to hope, support and healing.

And that hope belongs to all of us.



TO RECEIVE IMMEDIATE ATTENTION

Adult Crisis Services

 **517-346-8460**

Children's Crisis Services

 **517-346-8008**

Learn more about CMHA services.

www.ceicmh.org

Physical and Mental HEALTH MATTER!

The theme for the current issue of *Adelante Forward* is *Physical and Mental Health Matter*.

To aid in understanding their relationship, the Lansing Latino Health Alliance cites below an essay in *WebMD* that addresses in clear language the interrelationship and co-influence of the two healths.

How Does Mental Health Affect Physical Health?

“Although the mind and body are often viewed as being separate, mental and physical health are actually closely related. Good mental health or poor mental health can positively affect your physical health.

Effects of Mental Health on Physical Health

Your mental health plays a huge role in your general well-being. Being in a good mental state can keep you healthy and help prevent serious health conditions. A study found that positive psychological well-being can reduce the risks of heart attacks and strokes. On the other hand, poor mental health can lead to poor physical health or harmful behaviors.

Chronic diseases

Depression has been linked to many chronic illnesses. These include diabetes, asthma, cancer, cardiovascular disease, and arthritis. Schizophrenia has also been linked to a higher risk of heart and respiratory diseases.

Mental health conditions can also make dealing with chronic illness more difficult. The mortality rate from cancer and heart disease is higher among people with depression or other mental health conditions.

Sleep problems

People with mental health conditions are more likely to suffer from sleep disorders, like insomnia or sleep apnea. Insomnia can make it hard to fall asleep or stay asleep. Sleep apnea leads to breathing problems, which can cause you to wake up frequently. Around 50% to 80% of people with mental health conditions will also have sleeping problems. While conditions like depression, anxiety, or bipolar disorder may lead to sleep problems, sleep problems can also make existing mental health conditions worse.

Smoking

People with mental health conditions are more likely to smoke than those who do not have mental health conditions, and they are more likely to smoke more often.

Access to health care

People with mental health conditions are often less likely to have access to adequate health care. It may also be more difficult for people with mental health conditions to take care of their physical health.

When you have a mental health condition, it can be hard to seek care, take prescriptions regularly, or get enough exercise.



Physical Health Conditions That May Affect Mental Health

Your physical well-being also has an impact on your mental health. People with physical health conditions may also develop mental health conditions.

Psoriasis is a dermatological condition characterized by painful red sores on the skin. It is associated with acute stress and depression. Individuals with psoriasis experience emotional and psychological distress that negatively impacts their overall health and quality of life. Stress and depression mainly come from anxiety, stigma, and rejection.

Being diagnosed with cancer or having a heart attack can also lead to feelings of depression or anxiety. Around one-third of people with serious medical conditions will have symptoms of depression, such as low mood, sleep problems and a loss of interest in activities.



How to Take Care of Your Mental and Physical Health

If you want to improve your general well-being, you should take care of both your physical and mental health. Here are some ways to take care of yourself physically and mentally:

- **Get regular exercise.** Exercise is important for keeping physically fit, but it can also help improve your mood. A daily 10-minute walk may increase your mental alertness, leaving you energetic and in a good mood.
- **Eat a proper diet.** A diet high in fruits and vegetables and low in processed sugars or fats can make you feel better physically and mentally. Consider working with a qualified nutritionist to help you create a diet plan that fits your needs.
- **Get enough sleep.** A good night's sleep is around seven to nine hours for adults. You can also take a 30-minute nap during the day to feel more alert.
- **Try relaxation techniques.** Meditation, deep breathing, and focusing your thoughts can all help when you are feeling stressed.
- **Develop good mental practices.** Try to focus on positive emotions and events rather than negative ones.
- **Seek help from others.** Talking with friends or family can help you feel less stress. Getting others to help with difficult situations can also reduce the burden you feel.

Written by WebMD Editorial Contributor.

Medically Reviewed by Carol DerSarkissian, MD, July 8, 2025



Unaccompanied Refugee Minors

Our Unaccompanied Refugee Minors program helps children and youth who have fled their home countries due to war, violence, and persecution.

Youth in this program are typically 14 to 18 years old. They are from countries all over the world, such as Eritrea, Somalia, Honduras, Guatemala, and Afghanistan. Refugee youth in this program often remain in foster care for many years, so families committed to providing long-term care are needed. These youth are usually not adoptable, but can become an unofficial part of your family as you love and support them into adulthood.



You Can Help

Refugee foster care is challenging but rewarding. The young people in the program have endured traumatic events in their short lives. Their cultures are very different and often, they do not know English. They need a great deal of patience and understanding.

You can help them adjust to the educational, financial, political, and social systems in the United States. You can support them as they learn to be independent while also encouraging them to remain connected to their culture of origin.

When you are a foster parent for a refugee youth, you can feel good knowing you are helping a youth who is far from home. Foster parents provide:

- A safe place to sleep
- Basic needs like meals and clothing
- Transportation to school, therapy, medical appointments, independent living classes, etc.
- A positive adult role model
- Support and stability



Independent Living/Rent a Room

As foster youth transition to independence, they spend some time in an Independent Living program. They learn how to budget, grocery shop, plan meals, and care for a home while attending school and working.

If you have a room to rent out or are concerned about the licensing process of being a foster parent, consider becoming an Independent Living Host home. In exchange for a negotiated monthly rent, you will provide a room and you may serve as a live-in mentor. Independent Living Host homes do not need to be licensed as a foster home, and Host families are not legally responsible for youth.

Mentor a Youth

The goal of the mentor program is to provide positive role models to our refugee and immigrant foster care youth. Mentors will work toward helping our youth adjust to the culture of the United States as well as help to improve their personal, social, and independent living skills.

The program also provides mentors with trainings, support groups, and opportunities to grow as a leader within the community. Mentors must:

- Be 18 years of age or older
- Commit 9-12 consecutive months toward mentoring.
- Meet with youth a minimum of four hours each month.
- Participate in training sessions.
- Become a mentor today!
- Email us at LansingMentoring@samaritas.org for more information or to become a mentor!

Alone

In a Strange Land

They have fled from war, violence, and persecution in countries from all over the world. By the time they get to the United States, many have lost contact with parents and other family members.

Samaritas provides a safe, nurturing, and stable environment for refugee and immigrant youth who do not have parents or adults who can provide care. They are placed with foster families when they arrive in the United States. Some are eventually reunified with their families, while others need a family committed to a long-term relationship.

Contact us to schedule a meeting to learn more about our programs.

Samaritas[™]

Refugee Foster Care

1545 Keystone Ave. Lansing, MI 48911
 Phone: (517) 321-7663
 Fax: (517) 394-7688
 Email: RFCinfo@samaritas.org

Follow us on Social Media!



Samaritas[™]

Refugee Foster Care

A Home Beyond Borders

NATIONAL WOMEN'S HEALTH WEEK

Good news women, it's your time to make your health a top priority! **National Women's Health Week** begins on Mother's Day, May 10. This is the time when women across the country are reminded to take small, manageable steps that can help them live longer, healthier, and happier lives.

During this week, women are encouraged to get more active most days of the week; eat healthy by increasing their intake of fruits and vegetables; avoid unhealthy behaviors, such as smoking, texting while driving, and not wearing a seatbelt or bicycle helmet; and pay more attention to their mental health, including managing stress through increased sleep and physical activity. Women are also reminded to visit a health care professional to receive regular checkups and keep their preventative screenings up to date to help lower their risk of certain diseases and conditions.

A checklist of health screenings and other healthy lifestyle recommendations for women by age is available in English and Spanish at: <https://www.womenshealth.gov/healthy-living-age>.

Keep in mind that these recommendations are only guidelines, so women will need to talk with their healthcare providers to personalize the timing of the services they will need.

 semana nacional
de la salud
femenina





There are so many ways women can work to help spread awareness to other women about the importance of **National Women's Health Week**:

- Hold a free screening or health event for their place of worship or social group
- Put information in a newsletter, a blog, or on their own personal social media
- Offer women's health materials in an informational display in a common area where they work, go to school or workout
- Encourage women in their neighborhood to visit their health care providers for regular checkups
- Offer to transport a female friend or family member to their next health care provider appointment

Remember that Ingham County Health Department offers a wide range of comprehensive health services for women of all ages including primary health care in our Ingham Community Health Centers, and prenatal and gynecological care and support services in our Cedar Community Health Center - Women's Health. For more information, go to: ***hd.ingham.org***

Whatever women choose to do to celebrate **National Women's Health Week**, the most important thing is that they take time to make their health a priority along with the people they love and care for.

For more information or materials on National Women's Health Week, please visit ***<https://womenshealth.gov/nwhw/resources>***

*by Rona Harris
Community Outreach Specialist
Ingham County Health Department*



NATIONAL WOMEN'S HEALTH WEEK

¡ESTAMOS CONTRATANDO!

Cuidamos a nuestra gente porque son el corazón de nuestro negocio.

✓ Profesionales bilingües

Paquete de beneficios competitivo que incluye seguro de salud, plan 401(k) y tiempo libre remunerado.

WE'RE HIRING!

We take care of our people because our people are the heart of our business.

✓ Bilingual Professionals

Competitive benefits package including health insurance, 401(k) and paid time off provided.



fnba.com/careers



First National Bank
of America

Equal Opportunity Employer

Educating One Farmworker at a Time.

Luis Alonzo Garcia retired in January 2026 after 25 years leading MSU's College Assistance Migrant Program and Farmworker Student Services office, building one of the nation's most comprehensive support systems for students from migrant and seasonal farmworker backgrounds.

¡Muchas gracias, Luis Alonzo Garcia!



Office for Inclusive
Excellence and Impact
MICHIGAN STATE UNIVERSITY

inclusion.msu.edu



Ingham County Fair

MULTICULTURAL DAY



**Saturday,
August 8th
12:00p - 10:00p**



**Ingham County
Fairgrounds
700 E. Ash St.
Mason, MI
48864**

**CULTURAL SHOWCASE
Community Resources**



BECOME A VENDOR OR SPONSOR:

517-676-7326

SPPI@INGHAM.ORG



**INGHAM COUNTY
RACIAL EQUITY TASKFORCE**

**INGHAM COUNTY
EQUAL OPPORTUNITY
COMMITTEE**



Exp. 2026

ANY SIZE CONE

**BUY 1, GET 1
FREE**

Old Town



314 E Cesar E Chavez Ave Lansing, MI 48906



DLZ

Connect. Build. Thrive.



Potter Park Zoo New Animal Hospital



Potter Park Zoo New Animal Hospital



DONDE CONVERTIMOS SUS IDEAS EN UNA REALIDAD DE VANGUARDIA PERSONALIZADA!


DLZ es una empresa familiar de servicios de ingeniería, arquitectura y construcción dedicada a brindar soluciones para reducir costos a nuestros clientes, mejorar las operaciones y resolver problemas.

WHERE WE TURN YOUR IDEAS INTO A CUSTOM STATE-OF-THE-ART REALITY!

DLZ is a family- and employee-owned engineering, architectural, and construction services firm dedicated to providing solutions to save our clients' money, improve operations, and solve problems.

www.dlz.com



 DLZ Michigan, Inc.
1425 Keystone Ave., Lansing, MI 48911

 lansing@dlz.com
 +1 517.393.6800





Julian Samora Research Institute
University Outreach and Engagement
MICHIGAN STATE UNIVERSITY

New Leadership

AT THE JULIAN SAMORA RESEARCH INSTITUTE

The Julian Samora Research Institute (JSRI) at Michigan State University is pleased to introduce **Cristián Doña-Reveco** as its new director, effective August 1, 2026.

Doña-Reveco brings extensive leadership and research experience, most recently serving as director of the Office of Latino/Latin American Studies and associate professor of sociology at the University of Nebraska at Omaha. A two-time MSU graduate, he holds a Ph.D. in sociology and history and an M.A. in sociology, along with a master's degree from Pontificia Universidad Católica de Chile and a bachelor's degree from Universidad de Chile.

The JSRI team and the Office of University Outreach and Engagement look forward to this next phase of growth and impact under Doña-Reveco's leadership, as the institute continues its mission to generate, disseminate, and apply knowledge to serve the needs of Latino communities in the Midwest and across the nation.

Nuevo Liderazgo

EN EL JULIAN SAMORA RESEARCH INSTITUTE

El Instituto Julian Samora (JSRI) de la Universidad Estatal de Michigan se complace en presentar a **Cristián Doña-Reveco** como su nuevo director, a partir del 1 de agosto de 2026.

Doña-Reveco aporta una amplia experiencia en liderazgo e investigación; más recientemente, se desempeñó como director de la Oficina de Estudios Latinos y Latinoamericanos y como profesor asociado de sociología en la Universidad de Nebraska en Omaha. Graduado en dos ocasiones de la MSU, posee un doctorado en Sociología e Historia y una maestría en Sociología, además de una maestría de la Pontificia Universidad Católica de Chile y una licenciatura de la Universidad de Chile.

El equipo del JSRI y la Oficina de Vinculación y Participación Universitaria (UOE) esperan con entusiasmo esta próxima fase de crecimiento e impacto bajo el liderazgo de Doña-Reveco, a medida que el instituto continúa su misión de generar, difundir y aplicar conocimientos para atender las necesidades de las comunidades latinas en el Medio Oeste y en todo el país.



jsri.msu.edu

FREE PreK is Here!



Research shows that children who attend high-quality PreK programs are more likely to:

- **Read** well by third grade
- **Graduate** from high school
- **Attend** college
- **Earn** higher incomes

PreK prepares children for kindergarten, third grade and beyond. All children who turn 4 by December 1, 2026 can now qualify for **FREE** high-quality PreK in the 26-27 school year.



Visit www.inghampreschool.org to apply



Ingham Intermediate
School District
A Regional Educational Service Agency



These materials were developed under a grant awarded by the Michigan Department Lifelong Education, Advancement, and Potential (MiLEAP).

¡PreKínder GRATUITO está aquí!



Las investigaciones muestran que los/las niños/as que asisten a programas de preK de alta calidad, son más probables que:

- **Lean** bien por el tercer grado
- **Gradúen** de escuela superior
- **Asistan** a la universidad
- **Obtengan** ingresos altos

PreK prepara a los/las niños/as para kínder, tercer grado y más adelante. Todos los/las niños/as que cumplan 4 años por diciembre 1, 2026 pueden calificar ahora para preK GRATUITO de alta calidad en el año escolar 26-27.



Visite www.inghampreschool.org para solicitar



Ingham Intermediate
School District
A Regional Educational Service Agency



Estos materiales fueron desarrollados bajo una subvención otorgada por el Departamento de Educación Permanente, Avance y Potencial de Michigan (MILEAP).



“There is no *health* without
mental health.”

— Dr. David Satcher
former US Surgeon General

lafcu.com/join

L//AFCU
YOUR CREDIT UNION FOR LIFE



“No hay *salud* sin
salud mental.”

— Dr. David Satcher
ex Cirujano General de los Estados Unidos

lafcu.com/join

L//AFCU
YOUR CREDIT UNION FOR LIFE

¡ESTAMOS CONTRATANDO!

DEAN

TRANSPORTATION

Posiciones de conductor, asistente y mecánico diésel de autobús escolar en Lansing.

Programación flexible y paquete de beneficios competitivos incluido seguro médico, 401(k) y tiempo libre pagado.

No se requiere experiencia previa en conducción profesional para los conductores. Los conductores deben tener excelente historial de conducción. Se proporciona capacitación pagada para obtener una licencia de conducir comercial.

WE'RE HIRING!

School Bus Driver, Attendant and Diesel Mechanic Positions in Lansing

Flexible scheduling and competitive benefits package including health insurance, 401(k) and paid time off provided.

No prior professional driving experience required for drivers. Drivers must have excellent driving history. Paid training to achieve a Commercial Driver's License is provided!

Apply online today!
¡Aplique en línea hoy!

deantransportation.com/jobs

For more information,
contact us at (517) 319-8300

Para obtener más información,
comuníquese con nosotros al
(517) 319-8300



LANSING **BWA** 1st STEP



School to Training & Employment Program **2026 GRADUATING SENIORS**

Congratulations to the graduating high school seniors who took their 1st STEP along the path of career development

Pictured are: Adam McGowan (**Holt**), Christopher Roper (**Sexton**), Keegan Bennett (**Potterville**), Jasmine Henrys (**Potterville**), Alexander Hoenig (**Grand Ledge**), Annalee Black-Hill (**Bath**), Ben Rottier (**Grand Ledge**), Audrey McManus (**Eaton Rapids**), Ayden Bird (**Bath**), Jeannette Angelique (**Sexton**), Angelynn Kotch (**Bath**), Joseph Gulock (**Lansing Catholic**), Morgan McKissack (**Everett**), Isaiah Fundunburks (**Everett**), Madison Rosenberg (**Grand Ledge**) and Moses Byaruhanga (**Sexton**).

2026

1st STEP (School to Training and Employment Program) was created by the **Lansing Board of Water & Light** in partnership with several Lansing and surrounding area organizations and high schools. In addition to local area high school districts, the **BWL's** partners include: Lansing Community College (**LCC**), Capital Area Michigan Works!, Dean Transportation, Big Brothers & Big Sisters and International Brotherhood of Electrical Workers (**IBEW**) Local 352.

- **PAID, WORK-BASED EXPERIENCE**
- **POTENTIAL WORKFORCE ENTRY**
- **MICHIGAN SCHOLARSHIPS**

Our mission in **1st STEP** is to partner with local schools and offer high school seniors a “paid work-based learning experience” and opportunities for potential entry into a skilled workforce in the Utility Industry. Upon successfully meeting their graduation requirements, and completion of **1st STEP** students are awarded a \$2,000 scholarship to attend a college of their choosing in Michigan.

If you will be a high school senior during the 2026-2027 academic year and are interested in participating in **1st STEP**, please stay alert for information about this opportunity at your high school this fall. All seniors are encouraged to reach out to their school counselor or the Job Placement Coordinator in their area. For further details, please call 702-6400 or visit our website at www.lbwl.com to learn more about the **1st STEP**.



CELEBRATING 18 YEARS!

CONGRATULATIONS
CLASS OF 2026

FELICITACIONES



We are so proud of our graduates from
Eastern, Everett, and Sexton High Schools,
Lansing Learning Hub, and Capital Area K-12 Online!

V - Valedictorian S - Salutatorian * - Top Ten IB - International Baccalaureate Candidate 3.5+ - 3.5+ GPA

Please Note: Appearance of a student's name does not necessarily indicate that the student has fulfilled all requirements for graduation.



EASTERN HIGH SCHOOL CLASS OF 2026



Laith Ahmed Abdulsalam
Safiya Dadir Ahmed (3.5+)
Lexandria Albarez (IB)
Arick Sky Alexander (IB)
Laith Husam Farris Almusawi
Karina Brisey Alvarez Orta
Riahanna Marie Alward (3.5+, IB)
Ania Shaunta Anderson (3.5+)
Javier Emmanuel Angel
Vanessa Victoria Angel-Gonzalez
Anthony Josiah Applewhite
Isiah Israel Aubrey
Kendrick Lee Ayers
Raymond Deshawn Baldwin
Amadou Oury Barry
Vance Raine Basey
Ja'nyah Sah'rae Beasley
Nicole Renee Bell
Jesus Benito-Esquivel
LillyAna Rose Elizabeth Bennett
Josiah Ni'Keyce Biliu
Myonna Lachele Blackman
Jose Guadalupe Bonilla
Notorious Zulma Bowlin
Elise Makenzie Bowman
Carl Robert Bridenbaker
Chanelle Ivannie Brock
Joseph Albert Brown
Neayla Bonita Dee Burns (3.5+,* ,IB)
Avery Jesse Bustos
Juaquin Jaime Castellano
Emelly Castillo Solis (3.5+)
Raeannah Ariel Chandler
Finneas Danger Chapman-King
Westley Edward Cheeks
Isha Sharif Chivala
Apollo James Clark
Malcolm Xavier Clay
Lux Dawn Comer (3.5+,*)
Amya Laroya Crusoe
Jasper Antonio Cunningham
Melissa Cutie Acosta (3.5+,IB)
Ameerah Marie Davis
Cullen Anthony Davis
Washington Anthony Dejesus
Sampaio-Mayer (3.5+,IB)
Olivia Marie DeLaCruz (3.5+)
Amadou Diallo
Ava Versailles Diaz (3.5+,IB)
Hayden Layla Diaz-Brown
Jigamba Ebuela

Kayden Michael Wayne Fase (3.5+,IB)
Isaiah Flynn Faulkner (3.5+)
Ava Leigh Feldhauser (3.5+)
Makayla Nicole Feldhauser
Evan Russell Feldpausch (3.5+,*V,IB)
Savannah Analina Fernandez
Thomas Allen Foster
Henrik Joseph-Francis Fox
Miriam Nicole Froebe (3.5+,IB)
Alana Marisol Gabriel (3.5+,* ,IB)
Aisseah Brandon Garcia
Kenyatta Harki Gee
Joshua Lee Geller
Tashiyra Kelis Giles (3.5+)
Mikey Ruben Gomes
Adrianna Sophia Gonzales
Carlos Gonzalez Castro
Lasean Terrelle Granderson
Kimberly Tiara Green
Jaydon Blake Griffin
Jayla Kristy Griffin
Tyrese Anthony-Michael Griffin
Alexander James Hague (3.5+,* ,IB)
Amani Michelline Hakizamungu
Rain Marie Hall
Tra'mere Shaudai Harden
Ashtin Nathan Harriman
Braelyn Elise Hoover Hartig
Djemillah Mahamat Hassan (3.5+,IB)
Owen Douglas Heise
Kamarie Andrea Henry
Julian Jesus Hernandez
Xenia Mariposa Hernandez
Elliott Eric Hoagland (3.5+,* ,S)
Marshall Edward Holmes
Elijah James Hopkins
Symphany Jaelia Horn (3.5+,IB)
Diagia Princess Jeanne Hughes
Gloria Vandawt lang
Ezra Armel In (3.5+)
Aaron Amarie Kejaun Jackson
Kashmeir Rene Jackson
Tateum Lynn Johnson
Aliyah Danielle Louise Jones
Jeffrey Scott Kalka
Yohana Kaswara (3.5+)
Hanna Rose Love Kent
Az'aniah Harmoni King
Gavin Owen Knapp (3.5,* ,IB)
Ibrahim Joe Komakech
Rose Marie Lampman

Imani Chante Lemle
Miles Jesse James Lewis
Nataya Marie Lewis
Riahanna Diane Lewis
Reynel Leyva Rodriguez
Olivia Persais Lopez-Sauceda
Dallas Michael Lott (3.5+)
Noah Michael Lower
Laniya Ly
Tyren Tinh Ly
Teodocio Antonio Magana
Alyssa Ann Majors
Kussay Mohamad Marai
Angelina-Lucia Martinez
Elise Malory Martinez
Jazlynn Analiah Mata
Sidi M'bareck
Jacob Edward McDonald
Jamarion Ladon McDonald
Dale' Eleno Medrano
Kei'Shaun Demeriel Meeks
Ashley Mendoza-Guerrero
Ella Rain Minnick
Makhia Leigh Moist
Matthew Thomas Morse
Koamir RayArthur Muhammad
Autumn Marie Muhlenbeck
Kassidy Janell Murchison
Yonis Abdikadir Musa
Etabo Ngena
Eryn Irene Ocenasek
Melany Ochoa Marichal (3.5+)
Chidubem Ifeyinwa III Osakwe (3.5+)
Makayla Osieux
Kristy Ann Palacios
Leah A Palacios
Emmeric Ulinj Pancrasio
Da'Vanae Amani Parker
Patrick Petit-Dor
Alexandra Yenisei Pilar Delgado
Asa Hernandez Pumphrey (3.5+,* ,IB)
Lazaro Ebrían Ramos Rodríguez
Dequan Donyel Randolph
Hae Reh (3.5+,IB)
Noelia Jasmine Nieves Reyes Pozos
Amar'i Ja'nae Reynolds
Sebastian Esteban Rivera
A'Marian Darshawn Robinson-
Jackson
Jordan Mercayo Romero
Raul Jesus Delacruz Romero

Rosario D. Romero
Cayden Michael Root
Jontae Anthony Rosario
Paige Kennedy Rose (3.5+)
Adrielle Ar'vaeah Sadler
Andres Jalen Saenz
Emmanuel Lennox Sandford
Juan Osvaldo Sandoval
Katelyn Nicole Schultz
Siraj Mohamed Sharif
Dre'Vion Lamar Shepard
Natalie Mae Shipley
Ben Qiantian Smedley (3.5+)
Ciarra Ah'niya Nic Smith
Elijah Isabelle Sotelo
Devin Michael Spade
Jezriell Renai Spears (3.5+,*)
Beckett Shipley Stevens
Sanaiya Still
Nevaeah Lee Sutherlin (3.5+,*)
Za'Kyra Faye Thomas (3.5+)
Renson Tongeni
Latrell Demond Travis
Zechariah Dominic Turner
Anthony Henry Valdes (3.5+)
Cameron Luis Valtierra
Ariel Nkaii Namuno Vang (3.5+)
Litzi Sarai Velasco-Torres
Meriah Faith Velez
Ketia Wakiyota
Dominick Walengamina
Armani Lashawn Walker
Savannah Maxine Ward
Nautasia Nevaeah Watson
Mekhi Amar Watts
Kamryn Elise Weatherspoon
De'von Jerrell Wells-Tanner
Annaliesia Star Wemigwans
Braxton Robert Werner
Evan Charles Weston
Madison Paige White
Jordan Ray Wilcox
Edward Ruben Williams
Tyree Semaj Williams
Simone Dominique Willis
Azaria Reina Wilson (3.5+)
Janiya Latrice Wilson
Yengwa Dylan Yang
Yuepheng Austin Yang



EVERETT HIGH SCHOOL CLASS OF 2026



Hassan Asiimwe Ahebwa
Seren Anas Al Sayasneh
Zyriae Leana Allen
Zyaire Lavon Allen
Hiba Ahmed Almashhadani (3.5,*)
Richard Alonso
Mujtba Abdulmahdi Al-Rabiah (3.5,*)
Leonardo Alejandro Amador
Betancourt
Isaac Samuel Armbruster (3.5,*)
Vincent Edward Arnold

Carol Ann-Rose Arras
Nubia Faya Ashanti
Omran Abdolaaziz Atturkmane
Faouzi Faycal Babikir
Jordan Edward Baker
Vanessa Amani Baldwin
Jessica Barrera Flores
Janvier Baseme
Ariun Erdene Batjargal
Caidan Mykel Bauman
Rayanna Evette Beard

Phoenix Hamilton Beeker
Jayden Rashell Bennefield
Salima Bilombele
Lea Bizimana
Heavena Nicole Blackburn
Aubrianna Lashay Booker
Di'yanna Emonie Monae Brady
Leah Amari Brown
Daryl David Canelles Noa
Charles Steven Carter
DeMetria Marie Carter

Mareli Abigail Ceballos-Vazquez
Eric Anthony Cleve
Hunter Joshua Connelly
Jason Michael Costello
Carlos Junior Cruz Alcantar
Richard August D'Ascenzo
J'Veonna Naki Davis
Jamiah Davis
Megan Elizabeth Davis
Jaylynn Marie Dawson
Isaiah Manuel Dehuelbes-Chambers

(Continued)

Irumva Dieu Merci
Courtney Emma Dodd
Rianna Amira Elam
Jessie Duane Ellena
Cierra Sophia Elya
Amer Khaled Eshkuntana
Rebeca Estrada-Orta
Loreyna Angel Estrada-Robles
Providence Faida
Freedjy Faustin
Freud - Marven Faustin
Janeil Dechelle Foster
Isaiah R.B. Fry
Javari Teyshawn Leontae Funches
Isaiah David Fundunburks (3.5)
Emmanuel Gallegos Castro
Emman Gardner
Hadleigh Grace Gee
Sapnil Ghalley
Sirjan Ghising
Olivia Ann Glassbrook
Ezekiel Lydell Glover
Amaris Altezza Gonzalez
Kylee Arlene-Fae Greathouse (3.5)
Marwa Ali Halo
Shabana Hamidi
Brandon Christopher Harris
Joy Jordanae Harris
Azayla Lonnae Harris
Mustafa Mohammed Hasan
Thomas Joseph Hecksel
Daniel David Hight
Aryanna Marie Howard (3.5)
Alia Sayyaelina Howard
Samira Ibrahim
Mohammad Issa
Suhaila Javed (3.5)
Javon Marquise Jennings
Milyi'ana Bridget Johnson
Danielle Grace Johnson
Jasmine Renae Johnson
Lauren Isabel Johnson

Addam LaMarr Jones
Yousif Jawad Kadhim
Gamila Kalenga
Tyanna Naveah Kemp
Anna Maria Riad Khalaf
Rita Riad Khalaf
Mirach Salah Khalif
Reecha Khapangi
Benjamin Kapsian Khual (3.5)
Elizabeth Grace Ann King
Jayden Benjamin Lack
Brayla Renee' Landry
Legacy Jeremiah Royal Lee
Emmett Franklin Leidi
Andrea Lira Garcia
Maia Octavia Flores Lodise (3.5,*S)
Juan Carlos Lopez-Salgado (3.5)
Genevieve Arabella Lubbers
Logick Elijah Lyoya
Mursal Madadi
Abdel Aziz Youssouf Mahamat (3.5)
Madison Lynne Major
Palesa Makawa
Melyin Jose Martinez Campos
Brandon Cortez McCray
Morgan Elizabeth McKissack
Reynaldo Eleno Medraño
Ja'niya Jacqueline Mendenhall
Ariah Cristina Metters
Nathaniel Hudson Miller
Eisac Antonio Mireles
David James Mitchell
Mariam Mohamed
Sabirin Abdi Mohamed
Jaslyn Marie Moise
Melany Mora Gonzalez
Shaima Mosa Khail
Rebeca Muhawe
Kobe Larone Nason
Zohal Nawrozi
Kolette Nebulo
Ryan Lewis Nelson

Kamiti Ngugi
Julian Nicholson (3.5)
Patrick Niyosenga
Fabrice Nkurunziza
Leon Nonato Reboilo
Sumeya Mohamed Omar
Jesse Orta
Alma Cecilia Orta Gonzalez (3.5)
Emilio Samuel Ortega
Cash Lewis Ottgen-Hullett
Kylete Nasir Owens
Jonah Christopher Parkhill
Kalob Patlan
Kara Lynn Payne
Eevy Destiney Phan
Gabriela Amairani Pilar Delgado
Zoe Svanni Pittman
Hailey Jessica Puckett
Natasha Marie Pugh
Malcolm M Pulley
Silvia Ramirez-Alamillo (3.5)
Enrique Ramos Resendiz
Jericho Antonio Rangel
Sheril Janin Rayo
Mubarek T Redi
Jayla Rena' Reese
Neh Reh
Shaw Reh
Nicholas Marqueis Reiffer
Kannan Matthew Rensberry
Savanah Crystal Rensberry
Andy Resendiz
Ndizeye Response
Aracelli Alicia Re (3.5)
Ma'Kayla Marie Ricks
Emma R Rivet
Siena Louise Robinson (3.5,*)
Ylani Nyree Roper (3.5)
Devon Alexander Ruhf
Khyber Safi
Julienne Saïd
Ximena Esquivel Salgado

Perion Lavonne Sams
Mvamuzi Samson
Rayon DeJuan Sanders
Emily Sandoval (3.5,*V)
Miguel Pena Santana (3.5,*)
Michelle Rae Satterlee-King
Rohullah Shafaq (3.5)
Stone Alan Sheldon (3.5)
Ryder Dean Sheldon
Audrey Jean Sigler
Domingo Antonio Silva
Joelle Nevaeh Smith (3.5,*)
Alexavier Atreavian Solano
Talon Caan Spilker
Kayla Nanci-Renee Stevenson (3.5,*)
Rosie Mary Elizabeth Stitt
La'Riyah Miesha Rose Swain
Jose Tello (3.5)
Rogelio Eduardo Tello (3.5)
Analycia Valeria Tello
Manuel Martin Thompson
Olivia Tashanda Turner
Royalty Tycier Lee Tyler
Maliik Nasiir Tyler
Rebecca Uwase
Kevine Uwineza
Claudine Uwineza
Egypt Siab Zoo Vang (3.5)
Jayden Carl Verwey (3.5)
N'Shaiyah Aleigha-Mari Watkins
Lola Jo Weiss
Avion Alexander Wilson (3.5)
Jordan Malik Wilson (3.5)
Tionna Ebony Monique Wilson
Willie James Wilson
Amber Margaret Marie Winn
Laoulo Yacoub
Yaou Yacoub
Seid Abdoulaye-Ahmat Yacoub
Enoch Yang
Noha Zein (3.5,*)



SEXTON HIGH SCHOOL CLASS OF 2026



Kaltouma Abakar
Malak Mortada Mohamed Ali Adam
Damarcus Gerome Alexander
Fritz Junior Alexi
Abeer Majid Al-Rabiah (3.5,*)
Rahm Khoda Amani
Janet Angelique
Jieshon Shae'Near Armstrong
Irumva Audace (3.5+)
Megene Omar Awes (3.5+)
Nazrullah Babakarhiel
Isugi Belise
Dayinda D Benam
Drayden David Bridges
LaShawn Christopher Brock
Damien Terrell Brown
James Marcelous Alford Brown
Kivon Cimon Brown
Moses Byaruhanga
Anthony Neal Carr
Maxwell Laurence Carter
Christelle Casseus (3.5+)
Dominic Henry Giovanni Chaffee

Christian Lewis Charles
Cameron Lee Kenneth Chaves-Torres
Tabitha Lyn Clark (3.5+)
Isaac Tobias Clifford
Jadari Aamir Coleman
Elijah James Conrad
Gilford Lamar Dampier
Larry Leroy Dawson (3.5+,*
Le'Asiah LaShae Dawson(3.5+,*
Jamie Diaz
Trahae Arlandus Donaldson
Jordan Marie Dotson
Aveon Mariah Patricia Eaton
Shukuru Ebuella
Shaya'ndra Celia Escobar
Lorena Isabel Fernandez Diaz
Marcela De La Caridad
Fernandez Ruiz
Jewel Eyzek Fomby-Giles
Fally Frederic
Tavaris Dewon George
Aaliyah Nevaeh Shaylynn Giles
Ja'Nyla Javonah Jena Gill

Patricia Cheyenne Gilliam
Cain Micheal Gonzales
Samuel James Gray-Thompson
Khair Ullah Gul Hamid
Salim Ullah Gul Hamid
Romeo ZhaYing Her
Yoendry Vincente Hernandez
Asheigh Monet Brianne Handy
Herrod (3.5+)
Treavion Jordan Hester-Wilson
Asa Trinity Hill
TaLaura Larine Hobbs
Thomas Joseph Hobbs
Malachi Shamarr Hodge
Nevaeh Serenity Hatter Holey
Caiden Michael-Roy Hughes
Zaki Anthony Hurd
Nasibu Issa
Mekki LeRoy Johnson
Ki'laysia Michelle Jones
Luke Michael Jones
Makalis Shareece Jones
Ra'niyah Janelle Jones

Christopher Emanuel Julien, II (3.5+)
Jah'Reice Dayveon Kelso-McKinney
(3.5,*V)
Kah'Reice Lamareon Kelso-McKinney
(3.5,*S)
Zaniya Trenice King DeLouis
Omar Ean Knowles
Yassin Waheed Abdallah Komi (3.5+)
Ting Hsuan Kuo (3.5+)
Katie Nichole Lane (3.5+,*
Bruce Curtis Larkin
James Richmond Lemm
Madison LeeAnna Letts
Robert G. Lewis
Eric Lamar Lilly
Dane Bradley Loudenbeck (3.5+)
Muridi Abdullahi Lugendo
Changwa Ahmed Mahamed
Andreas RaShawn Manuel
Cedicia Martoungou (3.5+)
Ja'Veaah Janae Nicole Mays
Gavin McColgan
Traci-May Christene McGinley

(Continued)

JaiSean A'Quan McGowan
Baw Meh (3.5+,*)
Poe Meh (3.5+)
Antonio Maurice Melvin
Malechi Daniel Mercer
Jean Widson Middy
Aniyah Denise Miller
Immanuel Awktavion-Lethall Mitchell
Amillion Nasiah Moore
Yemaya Zaeemah Muhammad
Mario Djwhaun-Lamarr Murray
Gilmo Moses Nedziwe
Peter Ngboropeng Le
Rubhin Ngboropeng Le
Benanou Melia Octavie
Suheyb Abdi Omaar
Devin James Ornelas
Jakaree Kalil Parker

Abdulrahman Parwani
Elijah Marquis De Juan Patton
ReAzia Tiare Alizaona Pea
Jasper Kendall Perdue
Juan Augusto Perez
Melody Antonine Pierre
Sabrina Marie Prowdley
Bayleigh Sue Ramsey
Christopher Ari Ray
Darion Javon Rembert
Jaela Latriece Rice
Lavelle Riley (3.5+,*)
Victoria Lynn Robbins
Christopher Terrell Roper
Sylvia Flores Castilio Salazar
Mercadies Lynn Saldana
Bryan Anthony Sanders
Lily Christine Schouten

KenJuan Kamari Shannon-Pierce
Vanell Summer Sharp (3.5+)
Rosalee Ann-Marie Shearer
Basma Sherzad (3.5+,*)
Ihsanullah Shinwari
Terryon Payton Skipwith
Janiya Latisha Smith
Jason James Smith
Jhordyan Miracle Smith
Chevy Alexander Scott Spicer
Matthew Alexander Spyker
Josiah Tyrone Stewart
Lebron Marquan James Stitt (3.5+)
Charles Allen-Francis Swarouth
Kimorah Denise Talton
Asia Marie Taylor (3.5+)
Cerenity Lakayla Taylor
Emonee Monique Denise Turner

Treasure Maree Turner
Shukuru Tuyambaze
Trey Victor Van Belois
Aidyn Vang
Jose Octavio Velez
Bani Verdugo Velazquez
Tyron Washington
Tyleigh Nichole Wilkins
Johnathan Jerel Williams
Mekhi Elgenal Edward Williams
Mia Rose Wilson (3.5+)
Ambrielle Shaniece Wilson
Samuel Thomas Wilson
Aubree Elizabeth Kaj Siab
Yang (3.5,*)



CAPITAL AREA K-12 ONLINE CLASS OF 2026



Mikyel Justina Adams-Dabner
Mariah Kearra-Elyse Aikens
Justice Orlando Alexander
Diyana Abdullahi Ali
Iyona Na'vey Allen
Lexie Elizabeth Bazzani
Sydney Love Brainerd
Martin Joseph Cadwell (*)
Matthew Ryan Cantwell
Samir Isaiah Carlisle
Alyssa Jade Cioffi
Miles Isaiah Perry Clay
Tamarria Latrice Conner-Aikens
Dequarius Devon Coston
Jorge Cruz-Gonzalez
Jamont Jermaine Davis
Levi Ray Faulkner
Jaydin Marie Fiser (*)

Remillio Arnulfo Flores
Maryam George (* ,V)
Morgan Kay Graf
Amisha Maryann Storm Green
Anthony Javon-Tyree Griffin
Savannah Lynn Harris
Amayas Gabriel Hatley
Jada Maliyah Helton
Julian Daniel Hicks
Shantell Tashy Hill
Lemesha Emonne Jones
Martez Jones (*)
Nicole Lydia Josephine Jones
Amaya Joy Kelly
Devin James Xavier King
Kaedyn Julius Kline
Malik Amal Lewis
Trinity Ann Logsdon

Honnete Mbabazi
Estella Lee McLain
Ah'shanea Ann Michaud
Claire Elise Mowry
Markese Jordan Marshaun Murray (*)
Mauresa Allan Edward Murray (*)
Adia Nealy (*)
Aleo James Nixon
Unique Denise Oliver-Campbell
Justin Ortega Gonzalez
Ameriea Na'shel e Owens
Kahleel Corde' Patterson
Debora L Paulino
Isabella Anne Potter (*)
Alexander James Allen Putmon
Zahra Qurban Ali
Caliyah Geniece Ross
Zayden Anthony Scott

Kawoon Shamszai
Arianna Annmarie Shearer
Kegan Michael Smith-Asher
Jaylen Alan Stevens
Keyshawn Maurice Summerville
Kelis Terry
Ja'Breah Sherell Thomas
Te'lisza Jane Tomanica
KeAndre Dale Wallace
Sean Thaddeus Walls
Sanyah Tayne LaCoria Ward
Gracie Jill Welch
Ta'marion Malik Wells
Aerith Shadys Wilson
Jeremiah Maurice Woods (* ,S)



LANSING LEARNING HUB CLASS OF 2026



Bakri Isack Abakar
Sean L Adams
Olivia Renee Adway
Jesus Jose Alvarez
Malik James Arnold
Ja'nyah Sah'rae Beasley
Martelis William Thomas Beemer
Shaniya Jakayla Bridgeman
Olivia Coleen Brown
Kaylianna Mareli Calunga-Rodriguez
Alaya Savion Calvin
Alexsiyonna Lanyi Calvin
Gianny Lynn Coira-Serrano
Legend Jabrelle Cooper
Keira Jordan Crandall
Amiya Jade Cupples
Evan E. Daniel
Howard Dewayne Davis
Levi Michael DeLano-Clark
Jessica Jesus Manuel Dominguez

Jaden Anthony Edmonds
Zanaya Patrice Emanuel
Keiasia Shirley Lynn Eskin
Serenity Unique Etchison
Alicia May Fernandez
Zion Manchester Fleors
Reese Elisabeth Forlenza
Justin Edward Frison
Markayla Deiana Gilbert
Noah Seth James Grudzinskas
Akeelah Yvonne Hall
Nashiyah Rae Hall
Alon Luke London Alexander Harden
Joy Jordanae Harris
Cameron Reneard Hill
Norreana Renee Horton
Nirguaz Nadir Hussein
Travell Armoid Hutsona
Tayvion Gregory Jean-Pierre
Isiah Lamar Johnson (*)

Jackson Marshal Johnson
Lamarr Jaquese King Johnson
Tahj Trimmell Jones
Kamarri Rafael Jones
William Xavier Jones
Armani Andrew Kinney
Valentino Jensorio Lino-Limas
Monica Renee McAdoo
Cariyona Shanise McGhee-Haynes
Gavin Li'sean Millay
Makhia Leigh Moist
Zae'vion Sin'cere Mullins
Kieran Gerard Mulqueen
Donte' Detmer Neal
Shamarr William Paige-Strong
Tayshun Keith Pierce
Da'Shawn Lamont Ross
TaVyea Louise Rucker-Muhammad
M'Kensy Helena Thoma Ruiz
James Kenneth-Andrew Seger

Donovan Cash Semon
Devon Shelton
Isabel Josephine Smith
Zya Nicole Jazmine Smith
Aaron Jermaine Stroder
Maliq Derell Terry
Michael Dominique Terry III
Paris Ja'Nae Wakefield
Jacob Lee Ward
Jaylen Quincy Watson
Albert Amariontae Lee White
Der'Rick Glen Kharheem Whitfield
Alyssia Marie Wieland
Justice Lloyd Williams
Jacob Aaron-JaVon Williams
Semaj Loyd Wilson
Idris Marcelle Woods
Davionna Ann Woods-Jenks
Jayden Christine Yerke

CONGRATULATIONS GRADUATES! FELICITACIONES GRADUADOS!

LSEA wears green on Monday's in support of Mental Health Awareness. We care about our district.



Chuck Alberts, President
Alfonso Salais, Vice President
1216 Kendale Blvd.
East Lansing, MI 48823
517-999-4002

CONGRATULATIONS CLASS OF 2026! FELICIDADES, CLASE DE 2026!



You did it—and we're proud of you.

At Lansing Promise, we believe in every student's potential. That's why we provide scholarships and support to help qualifying graduates pursue college, university, or skilled trades. Keep going. Dream big. We're here for what's next.

Lo lograron—y estamos orgullosos de ustedes.

En Lansing Promise, creemos en el potencial de cada estudiante. Por eso ofrecemos becas y apoyo para ayudar a los graduados que califican a continuar sus estudios en la universidad, colegio comunitario o programas de oficios. Sigán adelante. Sueñen en grande. Estamos aquí para lo que sigue.



Learn more at
LansingPromise.org
or scan the QR code.

Conozca más en
LansingPromise.org
o escanee el código QR



* INGHAM COUNTY TREASURER *

Investing in Community through Affordable Housing



JOIN US IN JUNE!

INGHAM COUNTY HOUSING RESOURCE FAIR

DATE & TIME:
Wednesday, June 24th
3 PM to 7 PM

LOCATION:
Union Missionary
Baptist Church
500 S MLK Jr Blvd
Lansing, MI 48915

FREE ADMISSION - ALL WELCOME!

Housing Resources

Homebuying info, homeowner resources, & foreclosure prevention

Food & Community

Free food, local orgs, support services, & more

Expungement Clinic

with Safe & Just Michigan



Safe & Just Michigan

*PROMOTING HOMEOWNERSHIP

First Time Home Buyers



INGHAM COUNTY DOWN PAYMENT ASSISTANCE

Up to \$30,000 is available for income-qualified homebuyers purchasing a home within Ingham County!



HOMEBUYERS CREW

Resources for all aspects of the homebuying process — a way to connect, inform, & support the pathway to homeownership. Start your homebuying journey now!

SCAN ME!



*INVESTING LOCALLY TO EXPAND AFFORDABLE HOUSING INGHAM COUNTY EMERGING DEVELOPERS NETWORK

An initiative to support local, small-scale, and first-time developers navigating residential development.

More affordable homes, built locally, by breaking down barriers, encouraging sustainable construction, and broadening housing production.

CHECK OUT THE EMDevNet HUB



GREATER LANSING EMERGING DEVELOPERS RESOURCE HUB

*ASSISTING HOMEOWNERS

FORECLOSURE PREVENTION

If you owe delinquent taxes, we can help!

There may be resources & programs available to assist you. The Treasurer's Office has a payment program with matching funds. You can pay the delinquent taxes in half the time!



Call us

517-676-7220

DON'T LET TIME WORK AGAINST YOU



ALAN FOX, Ingham County Treasurer

tr.ingham.org | 517-676-7220



* INGHAM COUNTY TREASURER *

Invirtiendo en la comunidad a través de vivienda asequible



¡ACOMPÁÑANOS
EN JUNIO!

FERIA DE RECURSOS DE VIVIENDA DEL CONDADO DE INGHAM

FECHA Y HORA:
miércoles, 24 de junio
3 PM a 7 PM

LUGAR:
Union Missionary
Baptist Church
500 S MLK Jr Blvd
Lansing, MI 48915

ENTRADA GRATIS —
¡TODOS BIENVENIDOS!

Recursos de Vivienda

Información para compradores, recursos para propietarios y prevención de embargos

Comida y Comunidad

Comida gratis, organizaciones locales, servicios de apoyo y más

Clínica de Eliminación de Antecedentes

con Safe & Just Michigan



*PROMOVIENDO LA COMPRA DE VIVIENDA

COMPRADORES
DE VIVIENDA
POR PRIMERA VEZ



INGHAM COUNTY DOWN PAYMENT ASSISTANCE

¡Hasta \$30,000 disponibles para compradores que califiquen por ingresos y estén comprando una casa dentro del condado de Ingham!



HOME BUYERS CREW

Recursos para todas las etapas del proceso de compra de vivienda — una manera de conectarte, informarte y apoyarte en el camino hacia ser propietario.
¡Empieza tu camino hoy!

¡ESCANÉAME!



*INVIRTIENDO LOCALMENTE PARA AMPLIAR LA VIVIENDA ASEQUIBLE

INGHAM COUNTY EMERGING DEVELOPERS NETWORK

Una iniciativa para apoyar a desarrolladores locales, de pequeña escala y por primera vez que están aprendiendo a navegar el desarrollo residencial.

Más viviendas asequibles, construidas localmente, eliminando barreras, fomentando la construcción sostenible y ampliando la producción de vivienda.

CONOCE EL
EMDevNet HUB



*AYUDANDO A PROPIETARIOS

PREVENCIÓN DE EJECUCIONES HIPOTECARIAS

Si debes impuestos atrasados, ¡podemos ayudarte!

Hay recursos y programas disponibles para ayudarte. La Oficina del Tesorero tiene un programa de pagos con aportación equivalente. ¡Puedes pagar tus impuestos atrasados en la mitad del tiempo!

517-676-7220

NO DEJES QUE EL TIEMPO JUEGUE EN TU CONTRA



Call us



ALAN FOX, Tesorero del Condado de Ingham

tr.ingham.org | 517-676-7220



YOUR HEART WORKS HARD SO DO WE

When your heart needs help, trust the specialists who work just as hard as your heart does.

Our cardiac team combines advanced diagnostics, minimally invasive procedures, and the latest research to provide exceptional care for every beat. We're here for your heart, 24/7.

Cuando tu corazón necesita ayuda, confía en los especialistas que trabajan con la misma dedicación que él.

Nuestro equipo cardíaco combina diagnósticos avanzados, procedimientos mínimamente invasivos y las últimas investigaciones para brindar una atención excepcional a cada latido. Desde tratamientos que salvan vidas hasta ensayos clínicos innovadores. Las 24 horas del día, los 7 días de la semana.

Learn more at mclaren.org/lansingheart.





McLaren
CARDIOVASCULAR GROUP

Ibrahim Shah, M.D., FACC
Cardiology



McLaren Greater Lansing is proud to be the only hospital system in the Tri-County region accredited as a Chest Pain Center by the American College of Cardiology.

Lansing's Favorite Mexican Restaurant

Celebrate your Summer AT PABLO'S



Lansing's Community Hub

Since 2005, Pablo's Mexican Restaurant has been a beloved gathering spot in Lansing. More than just a place to eat, Pablo's has brought families and friends together to enjoy authentic Mexican cuisine. As we near our 20th anniversary, we celebrate the lasting connections we've made and our commitment to the community.



Honoring Heritage and Growth

This September, as we celebrate Heritage Month, Pablo's Mexican Restaurant proudly embraces its deep roots in Lansing's Hispanic community. For nearly 20 years, we've shared the vibrant flavors and traditions of Mexico with our city. Looking ahead, we're excited to strengthen our community ties through cultural events and outreach programs that celebrate our heritage and build a brighter future for all.



2010 E. Michigan ave
Lansing, MI 48912
(517) 580-8315



311 E. Cesar Chavez ave
Lansing, MI 48906
(517) 372-0887



ORDER NOW



90 Years. One Community.

2026 is our anniversary year, and the celebration starts with you. View member specials and event dates at casecu.org/90-years



Insured by NCUA.

C.L. MOORE & ASSOCIATES

Certified Public Accountants • Management Consultants

PROFESSIONAL TAX SERVICES

**530 SOUTH PINE STREET
LANSING, MI 48933**

**PHONE (517) 371-7876
FAX (517) 371-5616**

~ PROUDLY SERVING LANSING SINCE 1989 ~

C.L. MOORE
ASSOCIATES
Certified Public Accountants

Lake Michigan Holiday

Your home away from home

Dos hermosas cabañas a poca distancia del lago Michigan - Abierto todo el año
Two beautiful cottages walking distance to Lake Michigan - Open All Year
Rhele's Roost at Silver Lake Dunes & Cobmoosa Shores Cottage at Stony Lake
www.LakeMichiganHoliday.com - LakeMichiganHoliday@gmail.com - 517-402-3653



LANSING POLICE

"PROTECT MICHIGAN'S CAPITAL CITY"

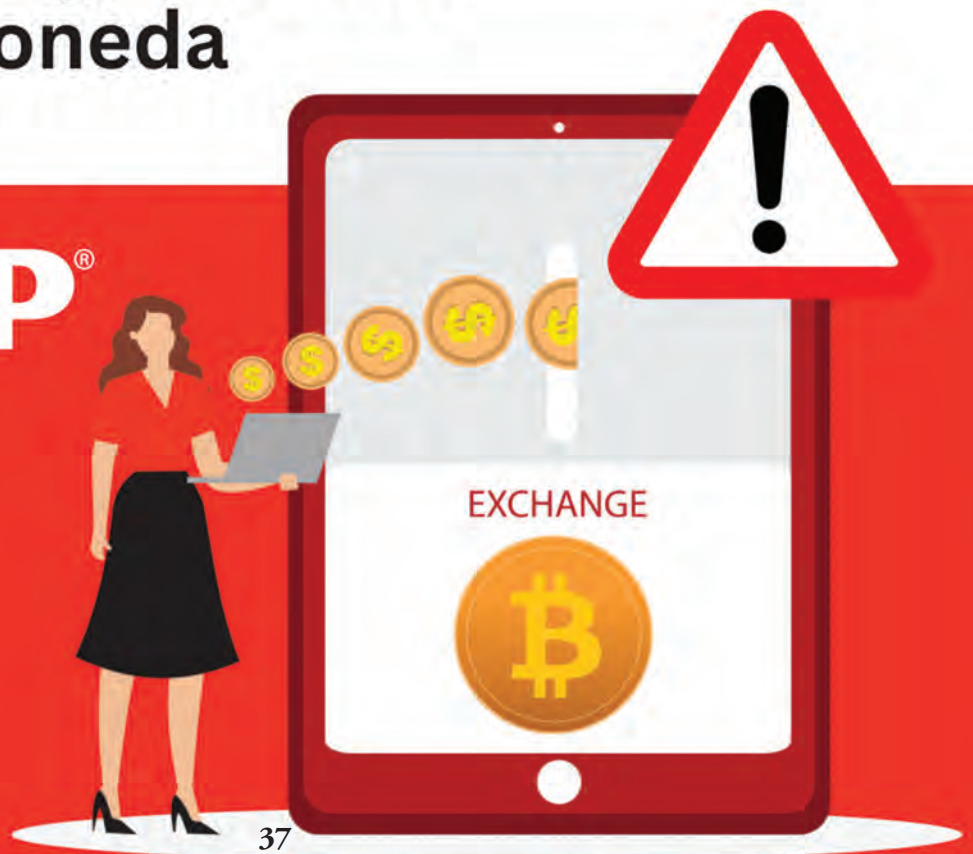
NOW HIRING!

TOP PAY: \$80,933 | 75% PENSION | 30+ SPECIAL ASSIGNMENTS | QUESTIONS? - LPD.RECRUITMENT@LANSINGMI.GOV

Las estafas de cajeros automáticos de criptomonedas les cuestan millones a los residentes de Míchigan.

Aprende sobre las estafas emergentes a través de la Red contra el Fraude, de AARP: aarpmi.org/estafadecriptomonedas

AARP[®]
Michigan



University of Michigan Board of Regents addresses behavioral health in Mid-Michigan



UNIVERSITY OF MICHIGAN
HEALTH-SPARROW
MICHIGAN MEDICINE



Construction is set to begin this summer on an \$83-million behavioral health hospital at the University of Michigan Health-Sparrow Lansing, moving forward a project aimed at filling a gap in psychiatric care for Mid-Michigan families.

The 64-bed facility, approved by the University of Michigan Board of Regents in February, will serve adults, geriatric patients and, for the first time in the region, children and adolescents. A separate \$60-million ambulatory surgery center also received approval and will break ground alongside the behavioral hospital this summer. Both facilities are scheduled to open in 2028.

“We are grateful for the regents’ approval,” said Margaret Dimond, Regional President of U-M Health. “Our communities deserve the level of care that is associated with U-M Health, and both of these projects address unmet needs, including the scarcity of behavioral health services in the region.”

Rising youth cases have contributed to thousands of behavioral health patients visiting UM Health-Sparrow Lansing Emergency Department annually, creating a backlog because of few psychiatric facilities.

“For many years, for decades really, there’s been a desert of care, especially in terms of inpatient services for the child/adolescent population,” said Victor Hong, Clinical Associate Professor of Psychiatry for Michigan Medicine. “This new hospital will enhance care in the region and add 16 new beds for child/adolescent patients. Right now, most pediatric patients are transferred over an hour away from Lansing.”

UM Health is collaborating with Sheppard Pratt, the nation’s largest private nonprofit provider of behavioral health and substance abuse services, to manage the new hospital. The ambulatory surgery center will be located west of UM Health-Sparrow Lansing near Michigan and Pennsylvania avenues.



UNIVERSITY OF MICHIGAN HEALTH-SPARROW
MICHIGAN MEDICINE

The \$143 Million investment calls for the construction of a 64-bed hospital, ambulatory surgical facilities, enhanced medical testing services and in-patient programs that focus on children and adolescents' behavioral health

The outpatient facility will initially include four operating rooms, with room to grow. It will replace procedures currently done at the 100-year-old St. Lawrence campus and relieve pressure on the UM Health-Sparrow Lansing's operating rooms, which are nearing capacity. Cardiac patients will benefit from a new MRI planned for the facility, reducing wait times.

“The approval by the regents allows us to better respond to the needs of our community and patients and allows room for growth,” said Ann Marie Creed, President of UM Health-Sparrow Lansing.

“This represents an incredible leap forward for us in moving our outpatient surgical services from an aging building to a new building that contributes to a vibrant medical campus in the middle of Lansing,” added Connie O'Malley, Regional Chief Operating Officer of U-M Health.

YOUR ROUTE TO ADVENTURE



Explore the Lansing River Trail and watch for wayfinding signs pointing to four CATA bus shelters featuring trail-friendly amenities:

- Bike racks
- Solar-powered lights
- Bike repair stations
- USB charging ports



CATA connects riders to the trails they love, with tools that make the transition from transit to trails easier.

TRANSIT TO TRAILS

CITY OF LANSING | LANSING RIVER TRAIL

LEGEND

- YOUR BIKE HERE
- CATA BUS STOPS WITH BICYCLE RACKS
- CATA VISION AND ROUTES
- TRAIL ACCESS POINT
- TRAIL

EXPLORE NATURE'S SCENIC ROUTES WITH CATA
CATA connects you to the trails you love, with tools that make your transition from Transit to Trails even easier.

- Bike repair stations, benches and shelters are available at nearby stops.
- CATA buses feature bike racks and are wheelchair accessible.
- Service animals and pets in secured carriers are welcome aboard.

THIS SECTION OF TRAIL SPONSORED BY:
Capital Area Transportation Authority
cata.org/TransitToTrails

Visit cata.org/TransitToTrails to learn more.

TU RUTA HACIA LA AVENTURA



Explora el sendero del Lansing River Trail y busca las señales de orientación que apuntan a cuatro paradas de autobús de CATA con servicios pensados para los usuarios del sendero:

- Zona para estacionar bicicletas
- Estaciones de reparación de bicicletas
- Luces alimentadas por energía solar
- Puertos de carga USB



CATA conecta a los usuarios con los senderos que les encantan, con herramientas que facilitan la transición del transporte al sendero.

TRANSIT TO TRAILS DRIVING MOBILITY SOLUTIONS

CITY OF LANSING | LANSING RIVER TRAIL

LEGEND

- BICYCLE RACK
- BIKE REPAIR STATION
- BENCH
- WHEELCHAIR ACCESSIBLE
- SERVICE ANIMAL AND PETS
- TRAIL ACCESS POINT
- PARK

EXPLORE NATURE'S SCENIC ROUTES WITH CATA
CATA connects you to the trails you love, with tools that make your transition from Transit to Trails even easier.

- 🚲 Bike repair stations, benches and shelters are available at nearby stops.
- 🚌 CATA buses feature bike racks and are wheelchair accessible.
- 🐕 Service animals and pets in secured carriers are welcome aboard.

THIS SECTION OF TRAIL SPONSORED BY:
Capital Area Transportation Authority
cata.org/TransitToTrails

Visita cata.org/TransitToTrails para obtener más información.



LÍNEA ABIERTA

Weekdays at 4 p.m. | 102.3 FM & AM 870

National live talk and call-in program hosted by Samuel Orozco, Chelis López, and Gerardo Guzman.



PULSO DE LA TARDE

Weekdays at 5 p.m. | 102.3 FM & AM 870

Daily news produced by Radio Educación in Mexico City. Hosted by Alexia Cervantes and Francisco Muñoz Flores.



LATINO USA

Saturdays at 8 a.m. & Sundays at 9 a.m. | 102.3 FM & AM 870

A window on cultural, political, and social ideas impacting Latinx people and the nation. Hosted by Maria Hinojosa.



ALT.LATINO

Saturdays at 9:00 a.m. and Sundays at 8:30 a.m. | 102.3 FM & AM 870

A spotlight on the world of Latinx arts and culture through music, stories, and conversation. Hosted by Felix Contreras.

bit.ly/3stPMgc



Programming and schedules are subject to change. Check for updates at www.wkar.org/show/latinx-programming-wkar-radio



LÍNEA ABIERTA

Lunes-viernes, 4 p.m. | 102.3 FM & AM 870

Programa nacional de entrevistas en vivo dirigido por Samuel Orozco, Chelis López y Gerardo Guzman.



PULSO DE LA TARDE

Lunes-viernes, 5 p.m. | 102.3 FM & AM 870

Noticiero producido por Radio Educación en Cd. México. Dirigido por Alexia Cervantes y Francisco Muñoz Flores.



LATINO USA

Sábados, 8 a.m. y domingos, 9 p.m. | 102.3 FM & AM 870

Una ventana acerca de ideas culturales, políticas, y sociales que impactan a la gente latina y a la nación. Dirigido por María Hinojosa.



ALT.LATINO

Sábados, 9 a.m. y domingos, 8:30 a.m. | 102.3 FM & AM 870

Un enfoque en el mundo de las artes y cultura latina a través de música, historias, y conversación. Dirigido por Felix Contreras.

bit.ly/3stPMgc



La programación y los horarios están sujetos a cambios. Busque actualizaciones en www.wkar.org/show/latinx-programming-wkar-radio



CMHA-CEI

INTERNAL

CHIEF EXECUTIVE

OFFICER



The Community Mental Health Authority of Clinton, Eaton, and Ingham Counties (CMHA-CEI) is in search of a new Chief Executive Officer (CEO). The CEO is responsible for guiding the Senior Leadership team as well as overseeing various services offered. This role includes managing contractual agreements with other organizations that provide a diverse array of mental health services to the residents of Clinton, Eaton, and Ingham Counties, in alignment with the approved plan and budget, the overarching policies set forth by CMHA-CEI, and the stipulations outlined in Chapter 2 and other relevant sections of the Michigan Mental Health Code. This role is to continue and actively support the growth of a positive work environment and service culture for individuals and families who seek care from our organization. Proactively monitor, develop, and maintain resources, trainings, and tools that enable staff to honor and respect one another and the communities we serve. Additionally, the CEO will offer general leadership and advice to the Board of Directors and Senior Leadership in formulating both long-term and short-term strategies, as well as in comprehensive planning.

Minimum Requirements

Minimum Requirements include:

- Master's degree in Social Work, Psychology, Public Health, Business Administration, or other similar related field.
- Minimum 5 years of professional administrative experience in management required. The areas of community mental health administration, hospital administration, public administration, institution management, business administration, or public health are deemed to be relevant fields of management.
- Minimum 4 years of experience in a mental health, human services or health care setting. Knowledge of mental health or human services principles and administrative practices is essential.
- A minimum of 3 years at senior administrative level required.

Minimum hours will be 40 per week with multiple evening obligations including community event attendance is required. Occasional in-state travel is required. Annual salary of \$168,938 - \$198,515 based on education and experience.

CMHA-CEI offers a robust benefit package that includes Health, Dental, Vision, Disability, Paid Time Off, 13 Paid Holidays, Defined Benefit and additional 457 Plan available.

Please submit letter of interest and resume along with salary requirements to Morgan McKittrick at mckittri@ceicmb.org

**MAKE A
PLAN**

TO VOTE

✓ Vote at Home

- For quickest delivery, request your ballot online at www.michigan.gov/vote.

✓ Vote Early or

- Saturday, July 25 – Sunday, Aug 2

✓ Vote Election Day - Aug. 4

- Polls Open 7 am - 8 pm.
- Some precincts have been changed
Visit LansingVotes.gov for your Location

**HACER UN
PLAN**

PARA VOTAR

✓ Votar en Casa

- Para una entrega más rápida, solicite su boleto en línea en www.michigan.gov/vote.

✓ Vote Temprano o

- Sábado, el 25 de julio al Domingo, el 2 de agosto

✓ Votar el día de las Elecciones

- Las urnas abren de 7 am. a 8 pm.
- Se han cambiado algunos distritos
- Visite LansingVotes.com para conocer su ubicación.



CHRIS SWOPE LANSING CITY CLERK
LansingVotes.gov (517) 483-4131

LANSING LOCOS

**THE LUGNUTS PLAY AS THE LOCOS
EVERY TUESDAY!**



**CINCO DE MAYO CELEBRATION
SUNDAY, MAY 3 @ 1 PM**

**FIESTA LOCOS W/ BOBBLEHEAD GIVEAWAY
SATURDAY, AUG. 22 @ 7 PM**

**EVERY LOCOS TUESDAY WILL FEATURE
\$5 TALLBOYS AND 2 TACOS FOR \$5!**



SCAN THE CODE FOR TICKETS AND INFO!

Friday, May 22

4:00 Gates Open

5:00 Welcome

Guillermo Z. López,
Fiesta Director

Fr. Vincent Richardson, Pastor
Andy Schor, Mayor of Lansing

National Anthem

Norma Patricia Contreras

5:25 -5:45

Ballet María Luz

5:45 Break

6:00 – 7:00

Mariachi Estudiantil



7:00 – 8:00 Contest



With DJ

8:00 Break

8:30 – 10:45



11:00 Good Night

Saturday, May 23

11:00 Gates Open

12:00 Welcome:

Guillermo Z. Lopez, Fiesta Dir.

Fr. Vincent Richardson, Pastor

Trini Lopez Pehlivanoglu, VP

Lansing City Council

**\$5 Donation Friday and
Saturday after 5 pm**

**Persons under 18 years
old must be
accompanied by an
adult family member.**



2026 LINE-UP

MC: Felipe Palacio, Jr.

12:15 – 12:35

Los Niños de Cristo Rey

12:40 -12:45

EI GRUPO FIESTA

12:50 – 1:10

Greater Lansing Area

Ballet Folklorico

1:15 – 1:45

Fashion Parade/

Defile de Modas

Break

2:30 – 5:00



Break

5:30– 8:00



Break

8:30- 10:50



11:00 Good Night!

Sunday, May 24

10:00 A.M. Gates Open

11:00 MISA/ MASS

1:30-2:00 Welcome &
SALUTE TO VETERANS
Presentation of Colors
Knight of Columbus
Color Guard

National Anthem:

Amanda Cena

Poema/ Poem

Cruz Villarreal

Sabes Que/ Do You Know?

2:10 – 2:20

Los Niños de Cristo Rey

2:05 – 2:10

Los Seniors de Cristo Rey

2:15 – 2:35

Fantasia

Ballet Folklorico

2:35 Break

2:50 – 3:20

Grupo Cristo Rey

Break

3:30 -4:00

Chema y Sus Muchachos

4:30 -7:00



6:00



6:15 – 7:00



END OF FIESTA!

SEE YA IN 2027!

**THANK YOU FOR YOUR
SUPPORT!**

**¡NOS VEMOS EN EL 2027!
¡GRACIAS POR SU APOYO!**

**Schedule is subject to
change**